

# **NOTICE TO MARINERS**

## **DUDGEON OFFSHORE WIND FARM CONSTRUCTION WORKS**

**NOTICE IS HEREBY GIVEN** that construction activities are in progress at the Dudgeon Offshore Wind Farm and Export Cable Corridor.

Foundation installation is completed and the Offshore Substation (OSS) has been installed. The vessel SEA Challenger will be used for accommodation at the OSS location and will later perform the wind turbine generator installation. Work is planned to start early September, 2016 and be completed in Q3, 2017

### **Cable protection work**

The Grand Canyon will be performing burial of the Inter Array Cables and for the unprotected section of the export cable (ref. p6). This operation is expected to start early September 2016 and be completed late November.

### **Guard vessel**

The Adventure will act as a guard vessel to safe guard the wind farm area. During port calls, Advance will be her back-up. Adventure will be on location from end April expected to be completed late October.

The Rachael S will act as guard vessel at the cable jointing location until splice is trenched and protected.

The vessel Vestland Cygnus will be used for personnel accommodation at the Dudgeon field area, and for transfer off personnel based on “walk to work” onto TP’s and the OSS. Vestland Cygnus will be on location from early July until late 2016.

Vestland Cygnus is supported by personnel transfer vessels

### Commissioning activities

For the commissioning work there are several Crew transfers vessels that operate in the field on a daily basis. This activity is ongoing and will continue until commissioning is completed in 2017.

### GENERAL

**MARINERS ARE HEREBY INFORMED** that a statutory construction Safety Zone (exclusion zone) is in place at the wind farm site. This safety zone is defined by:

**A 500 metres radius around each wind turbine, offshore sub-station and their foundations whilst work is being performed as indicated by the presence of construction vessels; and**

**A 50 metres radius around each wind turbine, the offshore sub-station platform and associated foundation structures installed, complete or incomplete but waiting to be commissioned as part of the Dudgeon offshore wind farm where personnel are present on, or are being landed on or being taken from, the structures.**

**All vessels will exhibit appropriate lights and shapes prescribed by the International Regulations for Preventing Collisions at Sea.**

**ALL VESSELS ARE REQUESTED** to give all construction and support vessels a wide berth.

**MARINERS ARE ADVISED** to navigate with caution and keep continued watch on VHF Ch. 16 when navigating the area.

**A further notice to mariners will be issued when these works are completed, expected autumn 2016.**

**Please direct any enquiries regarding this notice to:  
Statoil Wind Control Centre - [statoilwindcontrol@statoil.com](mailto:statoilwindcontrol@statoil.com)**

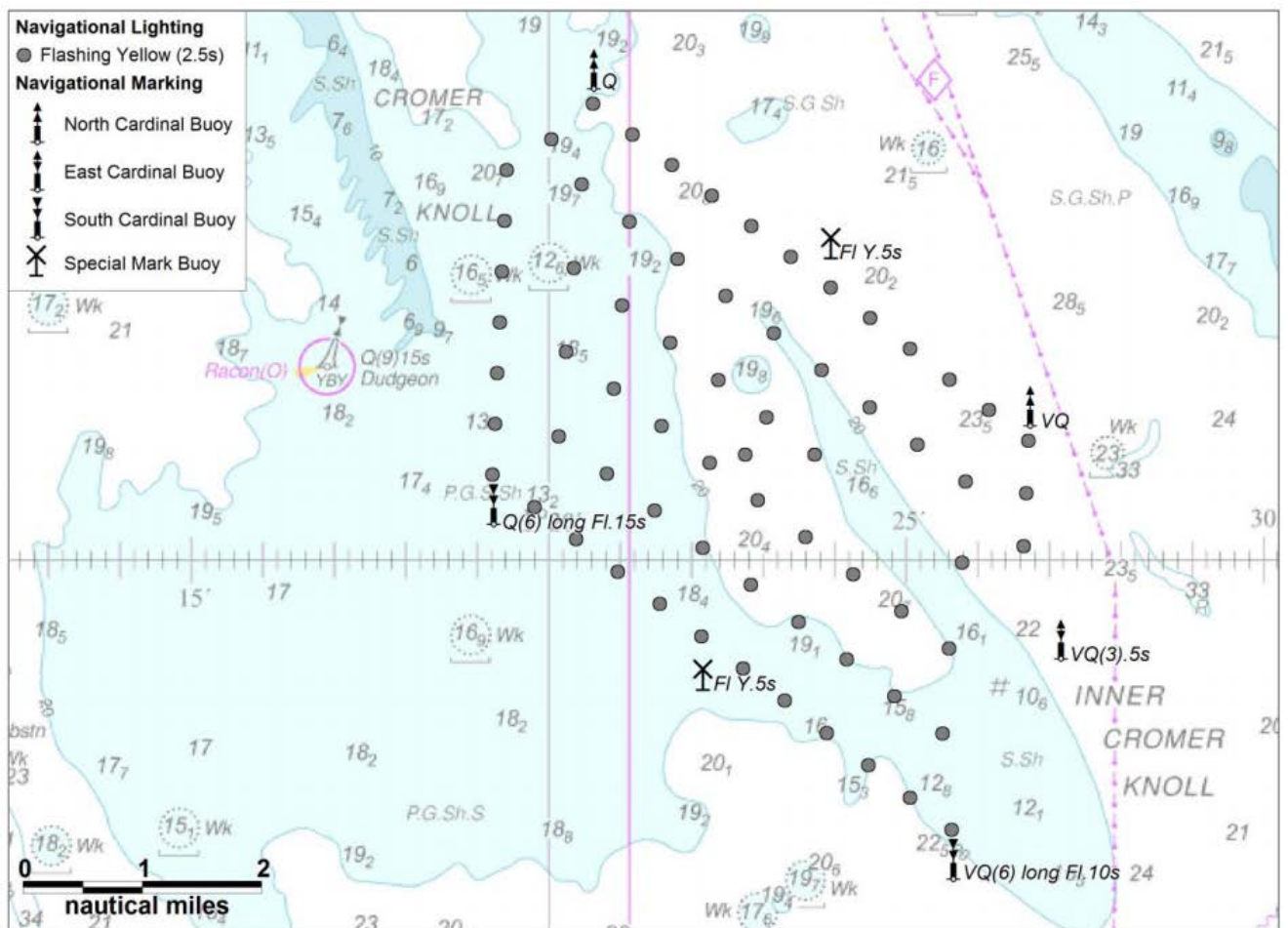
**A copy of this notice can also be found at:**

**<http://dudgeonoffshorewind.co.uk/news/notice-to-mariners>**

## SITE DETAILS

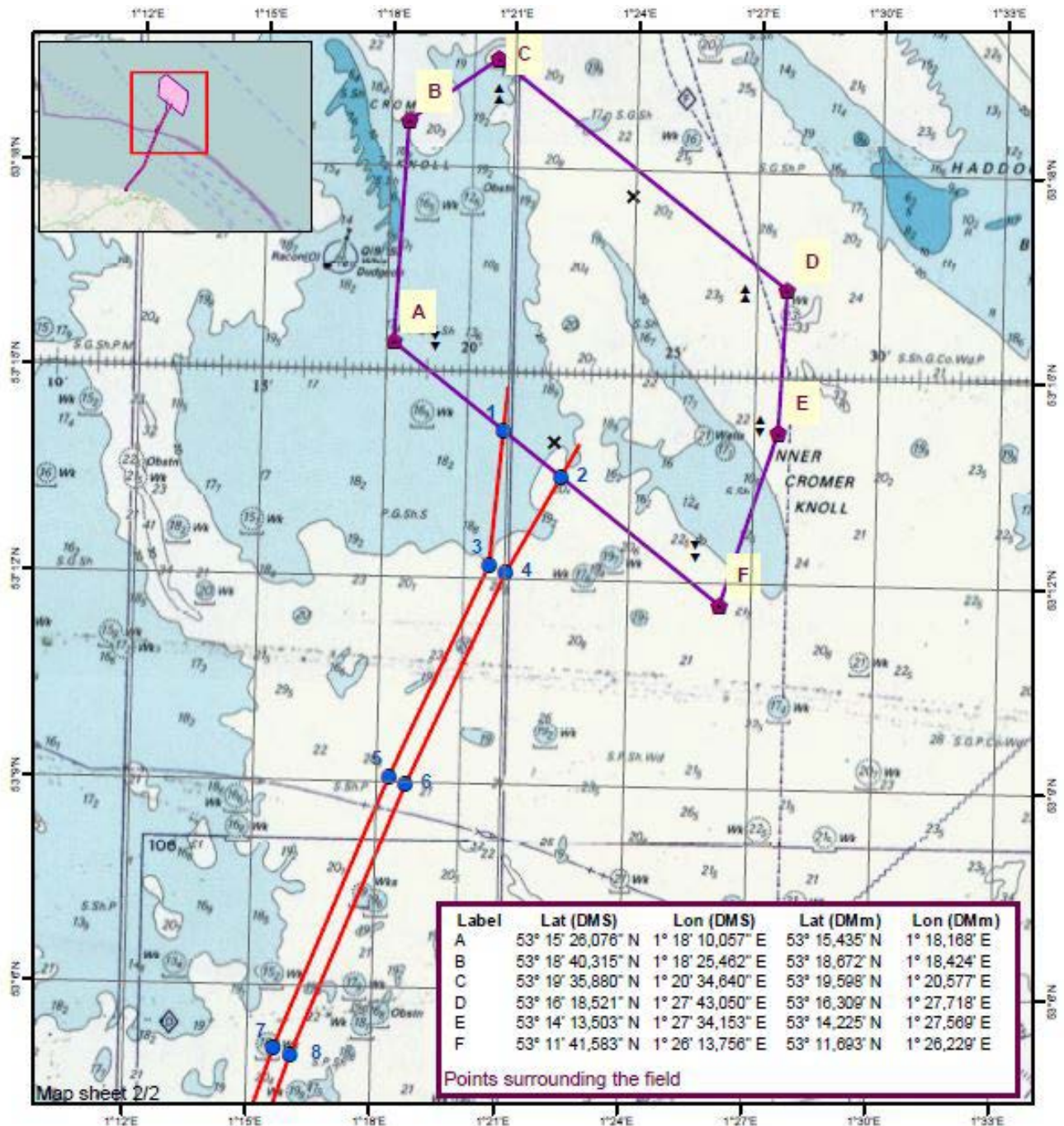
Position of Navigation Buoys demarcating the Dudgeon Offshore Wind Farm site

Mark	Location	Name	Latitude	Longitude	Status	Flash Character	Code	Range
North Cardinal	NW Cardinal	<b>N-DOW</b>	53° 19,102' N	1° 20,592' E	Temporary	Q	601	5nm
Special Mark	Special Mark North	<b>DOW - SM - N</b>	53° 17,631' N	1° 23,919' E	Temporary	Fl.Y.5s	328	5nm
North Cardinal	North East Cardinal	<b>NE - DOW</b>	53° 16,277' N	1° 26,691' E	Temporary	VQ	501	5nm
East Cardinal	East Cardinal	<b>E- DOW</b>	53° 14,320' N	1° 27,123' E	Temporary	VQ(3).5s	508	5nm
South Cardinal	SE Cardinal	<b>S - DUDGEON</b>	53° 12,470' N	1° 25,617' E	<b>Permanent</b>	VQ(6) long Fl.10s	516	5nm
Special Mark	Special Mark South	<b>DOW - SM - S</b>	53° 14,012' N	1° 22,132' E	Temporary	Fl.Y.5s	328	5nm
South Cardinal	SW Cardinal	<b>SW - DOW</b>	53° 15,451' N	1° 19,188' E	Temporary	Q(6) long Fl.15s	631	5nm





## Wind farm area and cable corridor north












Label	Lat (DMS)	Lon (DMS)	Lat (DMm)	Lon (DMm)
1	53° 14' 10,494" N	1° 20' 53,200" E	53° 14,175' N	1° 20,887' E
2	53° 13' 30,784" N	1° 22' 18,795" E	53° 13,513' N	1° 22,313' E
3	53° 12' 12,063" N	1° 20' 36,508" E	53° 12,201' N	1° 20,608' E
4	53° 12' 5,472" N	1° 21' 1,112" E	53° 12,091' N	1° 21,019' E
5	53° 9' 4,426" N	1° 18' 17,288" E	53° 9,074' N	1° 18,288' E
6	53° 8' 58,127" N	1° 18' 42,081" E	53° 8,969' N	1° 18,701' E
7	53° 5' 4,975" N	1° 15' 38,228" E	53° 5,083' N	1° 15,637' E
8	53° 4' 59,401" N	1° 18' 3,461" E	53° 4,990' N	1° 16,058' E

Points along export cable corridor

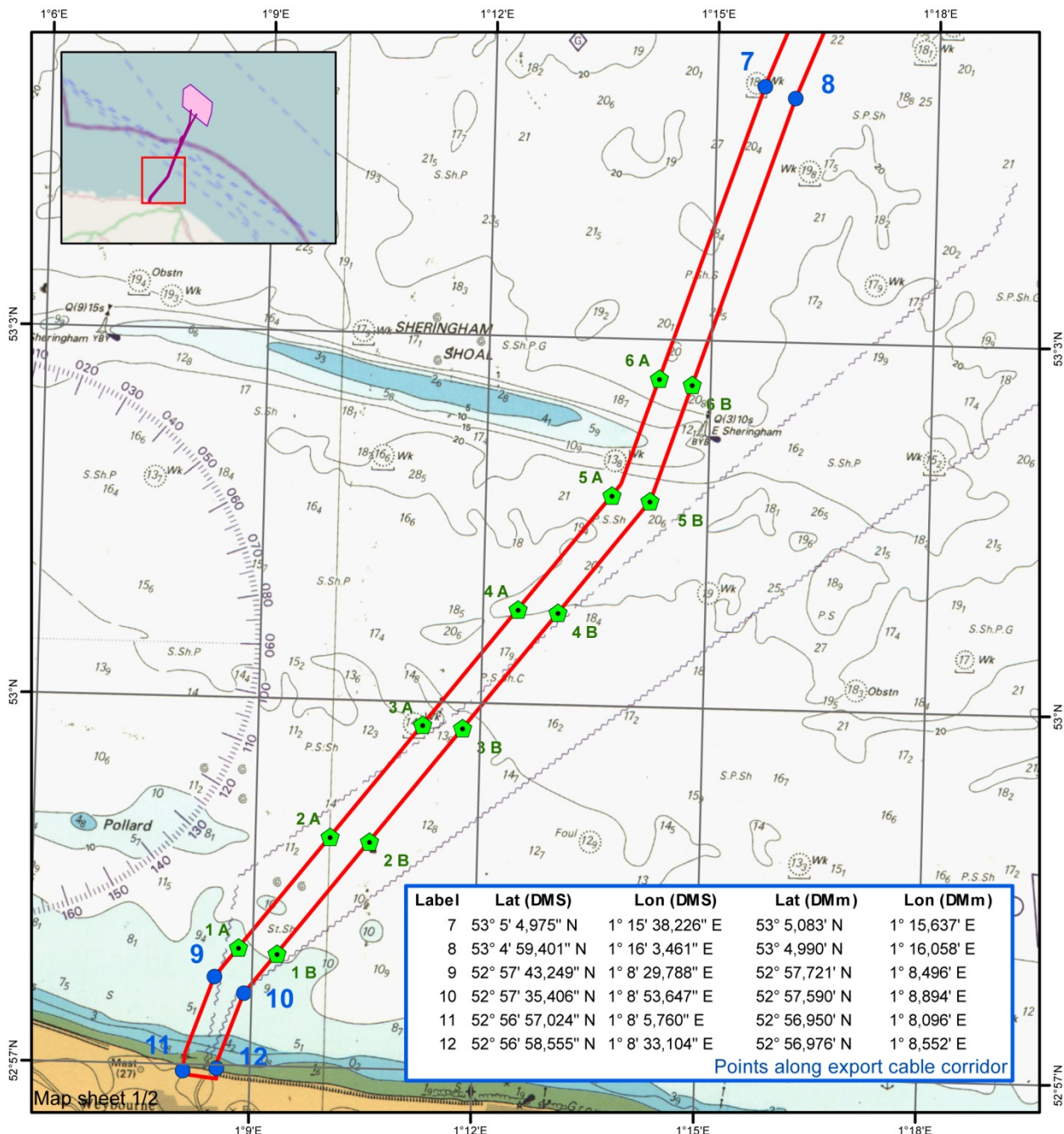


### Legend

-  Field Boundary Corner points
-  Field Boundary added 1000m
-  Survey Area - Export Cable, points
-  Survey Area - Export Cable
-  East Cardinal
-  North Cardinal
-  South Cardinal
-  Special Mark
-  West Cardinal

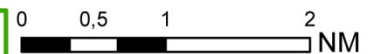


# Cable corridor south and export cable landfall



Label	Lat (DMS)	Lon (DMS)	Lat (DMm)	Lon (DMm)
1 A	52° 57' 57,894" N	1° 8' 48,791" E	52° 57,965' N	1° 8,813' E
1 B	52° 57' 55,481" N	1° 9' 19,702" E	52° 57,925' N	1° 9,328' E
2 A	52° 58' 53,227" N	1° 10' 0,633" E	52° 58,887' N	1° 10,011' E
2 B	52° 58' 51,451" N	1° 10' 32,388" E	52° 58,858' N	1° 10,540' E
3 A	52° 59' 49,079" N	1° 11' 13,216" E	52° 59,818' N	1° 11,220' E
3 B	52° 59' 47,890" N	1° 11' 45,752" E	52° 59,798' N	1° 11,763' E
4 A	53° 0' 46,724" N	1° 12' 28,201" E	53° 0,779' N	1° 12,470' E
4 B	53° 0' 45,434" N	1° 13' 0,623" E	53° 0,757' N	1° 13,010' E
5 A	53° 1' 43,601" N	1° 13' 42,256" E	53° 1,727' N	1° 13,704' E
5 B	53° 1' 41,112" N	1° 14' 13,136" E	53° 1,685' N	1° 14,219' E
6 A	53° 2' 41,270" N	1° 14' 18,352" E	53° 2,688' N	1° 14,306' E
6 B	53° 2' 38,543" N	1° 14' 45,145" E	53° 2,642' N	1° 14,752' E

Points marking 1NM intervals from shore



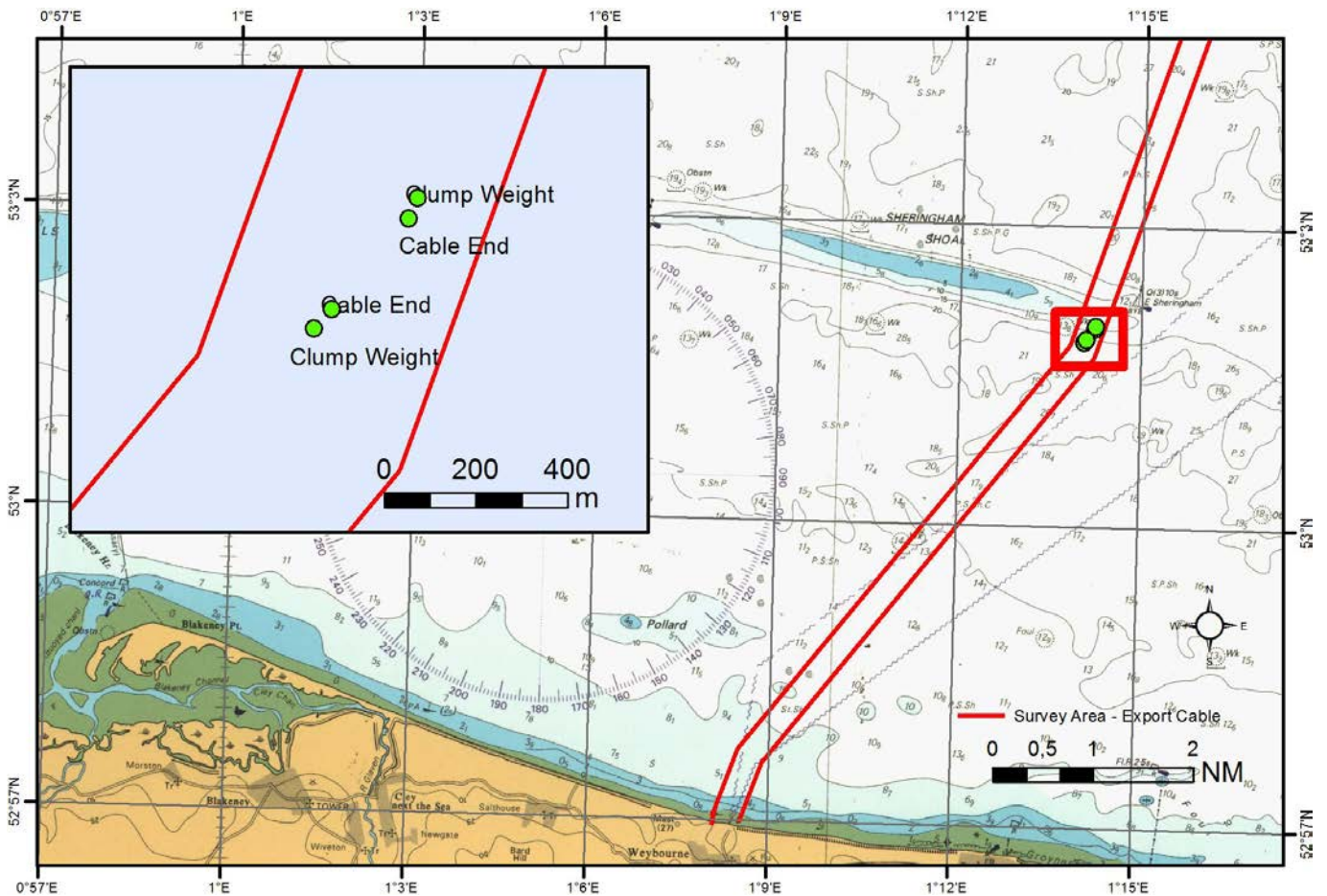
- Legend**
-  1 NM interval from shore
  -  Survey Area - Export Cable, points
  -  Survey Area - Export Cable



## GUARD VESSEL LOCATION

### Unprotected section of the Export Cable.

There is an unprotected section of the export cable on the seabed awaiting burial. This location is defined by the following area:



Cable End: 381789 E, 5877403 N / 53° 01.984' N, 001° 14.229' E

Clump Weight: 381808 E, 5877449 N / 53° 02.009' N, 001° 14.244' E

Holdback anchor / Marker buoy for initiation clump weight

Clump Weight: 381582 E, 5877163 N / 53° 01.853' N, 001° 14.048' E

Cable End: 381621 E, 5877206 N / 53° 01.876' N, 001° 14.082' E



## KEY CONSTRUCTION VESSEL CONTACT DETAILS

### Grand Canyon



Callsign: 3EVR8

Bridge phone: V-sat: +47 22 03 44 99

Captain: V-sat +47 21 03 45 00 / Immarsat +870 773205466

E-mail : [master@grand-canyon.no](mailto:master@grand-canyon.no) / [Gc1bridgesupt@helixesg.com](mailto:Gc1bridgesupt@helixesg.com)

### Adventure



Callsign: 2IFE4

Bridge Phone: TBA

E-mail : [adventureGS@gmail.com](mailto:adventureGS@gmail.com)

## Rachael S



**Callsign: 2FSB**

**Bridge Phone: GSM, mob 07880581433, SAT.TEL: 0088 1622469422**

**E-mail : [rachaelsgy305@e-catch.co.uk](mailto:rachaelsgy305@e-catch.co.uk)**

## Advance WY77



**Callsign: MZNA6**

**Bridge Phone: Sat. Phone: 00870773231090/01947 240024**

**E-mail : [adventureGS@gmail.com](mailto:adventureGS@gmail.com)**



## SEA Challenger



**Callsign: OWLQ2**

**Bridge Phone: V-sat: +45 89 88 90 10**

**Master phone: vsat +45 89 88 90 11 / GSM +45 52 13 95 80**

**E-mail : [seachallenger@a2sea.com](mailto:seachallenger@a2sea.com) / Master [mast\\_sc@a2sea.com](mailto:mast_sc@a2sea.com)**

## Vestland Cygnus



**Callsign: C6BW7**

**Bridge Phone: VSAT.TEL: +4723677230; +4723677230 / GSM: +47 41 43 02 07**

**E-mail : [captain.cygnus@vestlandoffshore.no](mailto:captain.cygnus@vestlandoffshore.no) ; [bridge.cygnus@vestlandoffshore.no](mailto:bridge.cygnus@vestlandoffshore.no)**